

# Children of God

61

37 Rock feel ♩ = 144

Words and Music by  
STEVEN CURTIS CHAPMAN  
Arranged by Dennis Allen

LADIES unis. *mf*

Who are the treas -

F(no3) F(no3)

(acc. track holds fermata 12 beats)

4

ured and the prized? Who are the ap - ple of God's eye?

B $\flat$ (no3)

7

ALL unis.

Who is? We are, we are, we are! MEN unis. *mf*

Who are the ones -

Dm B $\flat$ (no3) F(no3)

— who bear His name? Who are the chil - dren He has claimed

Bb(no3)

This system contains measures 10, 11, and 12. It features a vocal line in bass clef and a piano accompaniment in grand staff (treble and bass clefs). The key signature has one flat (Bb). The lyrics are: "— who bear His name? Who are the chil - dren He has claimed". A chord symbol "Bb(no3)" is placed above the piano part in measure 11.

13 ALL unis.

We are, we are, we are the ones\_

as His?

Dm Bb(no3) Dm

This system contains measures 13, 14, and 15. It features a vocal line in treble clef and a piano accompaniment in grand staff. The lyrics are: "We are, we are, we are the ones\_ as His?". The instruction "ALL unis." is written above the vocal line. Chord symbols "Dm", "Bb(no3)", and "Dm" are placed above the piano part in measures 13, 14, and 15 respectively.

16

God has sent His Son\_ to res - cue.

C Eb Bb  
D

This system contains measures 16, 17, and 18. It features a vocal line in treble clef and a piano accompaniment in grand staff. The lyrics are: "God has sent His Son\_ to res - cue.". Chord symbols "C", "Eb", and "Bb" are placed above the piano part in measures 16, 17, and 18 respectively. A "D" is written below the "Bb" in measure 18.

And now He calls us His own!

Measures 19-21 of the vocal line. The melody starts with a quarter rest, followed by a quarter note G4, a quarter note A4, a quarter note B4, a quarter note C5, a quarter note B4, a quarter note A4, a quarter note G4, and a quarter rest. The lyrics are: "And now He calls us His own!"

Gm7 F A Bb(no3)

Piano accompaniment for measures 19-21. The right hand plays chords and moving lines, while the left hand plays a steady bass line. Chords indicated are Gm7, F, A, and Bb(no3).

22 *Parts f*

We are the chil - dren of God. We are the chil -

Measures 22-24 of the vocal line. The melody starts with a quarter rest, followed by a quarter note G4, a quarter note A4, a quarter note B4, a quarter note C5, a quarter note B4, a quarter note A4, a quarter note G4, and a quarter rest. The lyrics are: "We are the children of God. We are the chil -"

*f* F(no3) Bb(no3)

Piano accompaniment for measures 22-24. The right hand plays chords and moving lines, while the left hand plays a steady bass line. Chords indicated are F(no3) and Bb(no3). The dynamic marking is *f*.

25

dren of God. We are the sons and the daugh - ters.

Measures 25-27 of the vocal line. The melody starts with a quarter note G4, a quarter note A4, a quarter note B4, a quarter note C5, a quarter note B4, a quarter note A4, a quarter note G4, and a quarter rest. The lyrics are: "dren of God. We are the sons and the daugh - ters."

Dm C

Piano accompaniment for measures 25-27. The right hand plays chords and moving lines, while the left hand plays a steady bass line. Chords indicated are Dm and C.

Al - might - y God \_\_\_\_\_ is our Fa - ther. \_\_\_\_\_ We are the chil -

Gm7 Bb(no3) F(no3)

dren of God. \_\_\_\_\_ We are the chil - dren of God.

Bb(no3)

34 41 2nd time

How can we keep from sing-in'? \_\_\_\_\_ We are the

Dm C 2nd time to Coda (meas. 65) Gm7

chil - dren of God. La la la la la la

The vocal line consists of two staves. The upper staff has a treble clef and a key signature of one flat (Bb). The melody starts with a quarter note G4, followed by quarter notes A4, Bb4, and C5. There are rests in measures 38 and 39. The lower staff has a bass clef and contains a bass line with quarter notes G2, F2, E2, and D2.

Bb(no3)

F(no3)

Gm7

The piano accompaniment consists of two staves. The upper staff has a treble clef and a key signature of one flat. It features chords and moving lines. The lower staff has a bass clef and features a steady bass line with quarter notes.

39

la la la la La la la

The vocal line consists of two staves. The upper staff has a treble clef and a key signature of one flat. The melody starts with a quarter note G4, followed by quarter notes A4, Bb4, and C5. There are rests in measures 41 and 42. The lower staff has a bass clef and contains a bass line with quarter notes G2, F2, E2, and D2.

E  
A

Bb

F(no3)

The piano accompaniment consists of two staves. The upper staff has a treble clef and a key signature of one flat. It features chords and moving lines. The lower staff has a bass clef and features a steady bass line with quarter notes.

la la la la la la

The vocal line consists of two staves. The upper staff has a treble clef and a key signature of one flat. The melody starts with a quarter note G4, followed by quarter notes A4, Bb4, and C5. There are rests in measures 44 and 45. The lower staff has a bass clef and contains a bass line with quarter notes G2, F2, E2, and D2.

Gm7

E  
A

Bb

The piano accompaniment consists of two staves. The upper staff has a treble clef and a key signature of one flat. It features chords and moving lines. The lower staff has a bass clef and features a steady bass line with quarter notes.

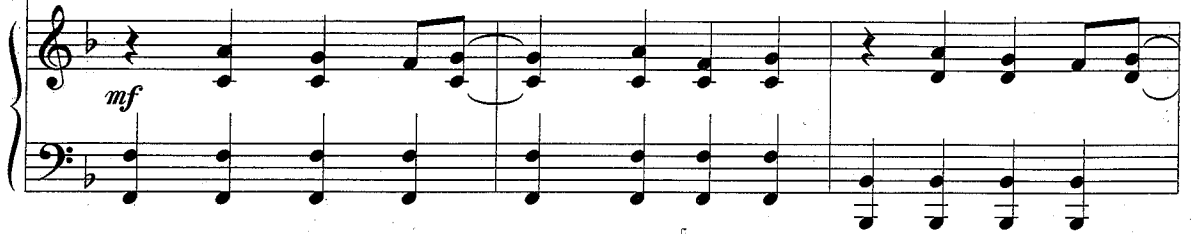
46 LADIES *mf*



Who'll keep the rocks\_\_ from cry - ing out? Who are the voic -

F(no3)

Bb(no3)



49

ALL



es that will shout His praise? We are, we are, we are!

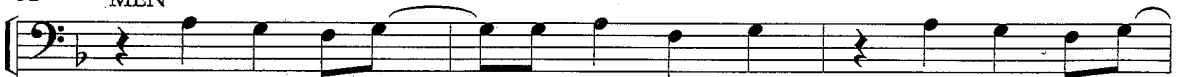
Dm

Bb(no3)



52

MEN



Who are the ones\_\_ who bear His name? Who are the chil -

F(no3)

Bb(no3)



We are, we are, we are!

dren He has claimed as His?

B $\flat$ (no3) Dm B $\flat$ (no3)

How great the love the Fa - ther has shown us,

Dm C E $\flat$  B $\flat$ /  
D

40

*D.S. al Coda*  
(to meas. 22)

that He would call us His own!

Gm<sup>7</sup> E/A B $\flat$ (no3)

*D.S. al Coda*  
(to meas. 22)

68  $\Phi$  CODA

65

*Smoother, half-time feel*

*mf*

We are His chil - dren, and we will sing for joy -

$\Phi$  CODA

Gm<sup>7</sup>

B<sup>b</sup>(no3)

*Smoother, half-time feel*

Am<sup>7</sup>

*mf*

68

for the God on His throne, He has

B<sup>b</sup>

Dm<sup>7</sup>

C

71

come for us and called us His own.

Am<sup>7</sup>

B<sup>b</sup>

Dm<sup>7</sup>



And we will sing for joy as the

C Am7 Bb

42

dear - ly loved chil - dren of God.

Dm7 C Gm11

Come on, let's sing! La la la la la la

F(no3) Gm7

la la la la La la la

F/A B<sup>b</sup> F(no3)

la la la la la la

Gm<sup>7</sup> F/A B<sup>b</sup>

*Parts f*

We are the chil - dren of God. We are the chil -

F(no3) B<sup>b</sup>(no3)  
f

dren of God. We are the sons and the daugh - ters.

Bb(no3) Dm C

95 (43)

Al - might - y God is our Fa - ther. We are the chil -

Gm7 Bb(no3) F(no3)

98

dren of God. We are the chil - dren of God.

F(no3) Bb(no3)

101

How can we keep from sing - in'?

Dm C

103

We are the chil - dren of God.

Gm7 Bb(no3)

105

We are the chil - dren of God!

Gm7 Bb(no3) F