

Hallelujia, Praise the Lamb

Words and Music by
GARY McSPADDEN, DAWN
THOMAS and PAM THUM

Arr. by Carol Cymbala

flute solo
Harp

Solo Cello

With much expression

* Choir (a cappella)

19

P (unis.)

Hal - le - lu - jia, praise the Lamb.

Cm A^bm/C^b E^b/B^b A^b/B^b B^b7

mp

all strings
B² Oboe

Solo 6 (if male, sing at pitch)

From the mo - ment man first dis - o - beyed the

E/B F[#]/B C[#]m7 E/F[#] F[#]7

Fa - ther, we were then held cap - tive by our

* If using track, delete this choral introduction.

B² F[#]/A[#] G[#]m7

sins; The Law of God de-mand - ed

A[#]m7 D[#]7 G[#]m7 B/C[#] C[#]9

a sac - ri - fice, re - stor - ing to Him-self His own a -

A⁺maj⁹ E/F[#] F[#]

gain. So the

strings (and) low

15

B²

B

E/F#

F#

Lamb, His on-ly Son, was free-ly of-fered, a-

C#m7

E/F#

F#

B²

B

tone - ment for our sins for-ev - er made. He,

Oboe

1st Violins

B/A

E²/G#

E/G#

A#m⁷(4)

D⁷

G#m⁷

F#/G#

G#m⁷

in-no-cent and ho-ly, still God and God on-ly, could

flute

B/C# C#9 E/F#

ran - som and re-deem us back a - gain.

Detailed description: This system contains the first vocal line and piano accompaniment. The vocal line is in treble clef with a key signature of three sharps (F#, C#, G#). The lyrics are "ran - som and re-deem us back a - gain." The piano accompaniment is in grand staff (treble and bass clefs). Above the system, the chords B/C#, C#9, and E/F# are indicated. Handwritten notes include "flute" in the top right corner.

24 *Drums* *7 Pipe* Trio or opt. Choir

mel.

So I say, Hal - le - lu - jia, praise the Lamb, hal - le

Detailed description: This system contains the second vocal line and piano accompaniment. The vocal line is in treble clef with the lyrics "So I say, Hal - le - lu - jia, praise the Lamb, hal - le". The piano accompaniment is in grand staff. Above the system, there is a box containing the number "24", followed by handwritten notes "*Drums*" and "*7 Pipe*". The text "Trio or opt. Choir" is written to the right of the piano part. The word "mel." is written above the vocal line.

F# E/F# B2 Emaj7 E B2 B F#/A

Detailed description: This system contains the piano accompaniment for the second system. The chords F#, E/F#, B2, Emaj7, E, B2, B, and F#/A are written above the treble staff. The piano part is in grand staff.

flute

lu - jia, praise the Lamb. My heart sings His praise as

Detailed description: This system contains the third vocal line and piano accompaniment. The vocal line is in treble clef with the lyrics "lu - jia, praise the Lamb. My heart sings His praise as". The piano accompaniment is in grand staff. A handwritten note "*flute*" is written above the vocal line.

G#m G#m7 C#9 E/F# F# E/F# F# B Emaj7 E

Detailed description: This system contains the piano accompaniment for the fourth system. The chords G#m, G#m7, C#9, E/F#, F#, E/F#, F#, B, Emaj7, and E are written above the treble staff. The piano part is in grand staff.

3 Desc

> forte

gain. Hal - le - lu - jia, praise the Lamb.

B² G#m² G#m Em⁶/G B²/F# E/F# B

Horn

Solo continue (opt. ALTOs unis.)

accel
Em/B

B

mf

33

Bm

Str. Trip

So to the cross — they car - ried Him, — with

mf with intensity

Em

Em⁷

Em⁶

G

D/G

G

all our guilt and all our sin. The Lamb of God was slain for our trans -

8va

Bono

flute

F#sus

F#

Bm

gres - sions. And on the cross those nail - pierced hands reached

E2sus

Em

G

up to God and down to man, and just as if I've nev - er sinned

8va

C13(#11)

B7sus

B7

Em

Em/D

no rit

40

He took me in His arms, em - brac - ing me, He will - ing - ly for -

G/A

G2/A

(opt. add SOPRANOS with ALTOS)

no rit f

trumpet

gave! For

44

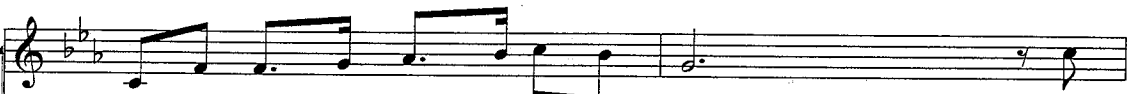
E^b E^b2/G E^b/G A^b/B^b B^b7



mer - cy, grace and love that knows no bounds. Though



Fm B^b7sus B^b7 E^b B^b/E^b E^b



guil - ty and con-demned, I now am free. For -



E^b/D^b A^b2/C A^b/C C E^b/F Fm



ev - er I'm for-giv-en, for Christ the Lord has ri-sen, and



20

E^b/F F7 F B^b A^b/B^b



ri - sen with Him we shall one day



Choir (solo cont. ad lib to end)

atempo

molto rit. f

53

a tempo

be. Oh, Hal - le - lu - jia, praise the Lamb, hal - le -

A^b/B^b B^b E^b/B^b B^b7 E^b E^b2/G A^bmaj⁹ A^b/B^b E^b E^b2 E^b B^b/D

molto rit. *f a tempo*

lu - jia, praise the Lamb. My heart

Cm Cm⁷ F⁹ Dm/F F⁷ A^b/B^b B^b7

sings His praise a - gain. Hal - le

E^b E^b2/G A^bmaj⁹ A^b/B^b E^b E^b2 E^b C²sus Cm A^bm/C^b

no rit

21

lu - jia, praise the Lamb. Hal - le -

E^b/B^b A^bmaj⁷/B^b E^b D^b/E^b E^b

61

lu - jia, praise the Lamb, hal - le -

A^b A^b/D^b D^b/E^b A^b E^b/G

ff

lu - jia, praise the Lamb. My heart

Fm Fm⁷ B^b⁹ Gm/B^b B^b⁷ E^b⁷sus D^b/E^b E^b/G

sings His praise a - gain. Hal - le -

A/C A^b/D^b D^b/E^b A^b F²sus Fm D^bm/F^b

67 lu - jia, praise the Lamb. (Hal - le -

A^b/E^b D^bmaj⁷/E^b Fm Fm/E^b B^b7 F²aug

70 lu - jia, praise the Lamb.) My heart Ah

A^b/E^b Fm/D

71

sings His praise a - gain. Hal - le -

A/E Dmaj7 D A/C# F#2sus F#m Faug Fb5(no3)

75

lu - jia, praise the Lamb.

A/E Aaug/E D/E E A

Rit

fff

Praise the Lamb!

D/A A

Handwritten notes: Basso continuo

fff

Handwritten notes: V4, V3, V2, V1, 8va